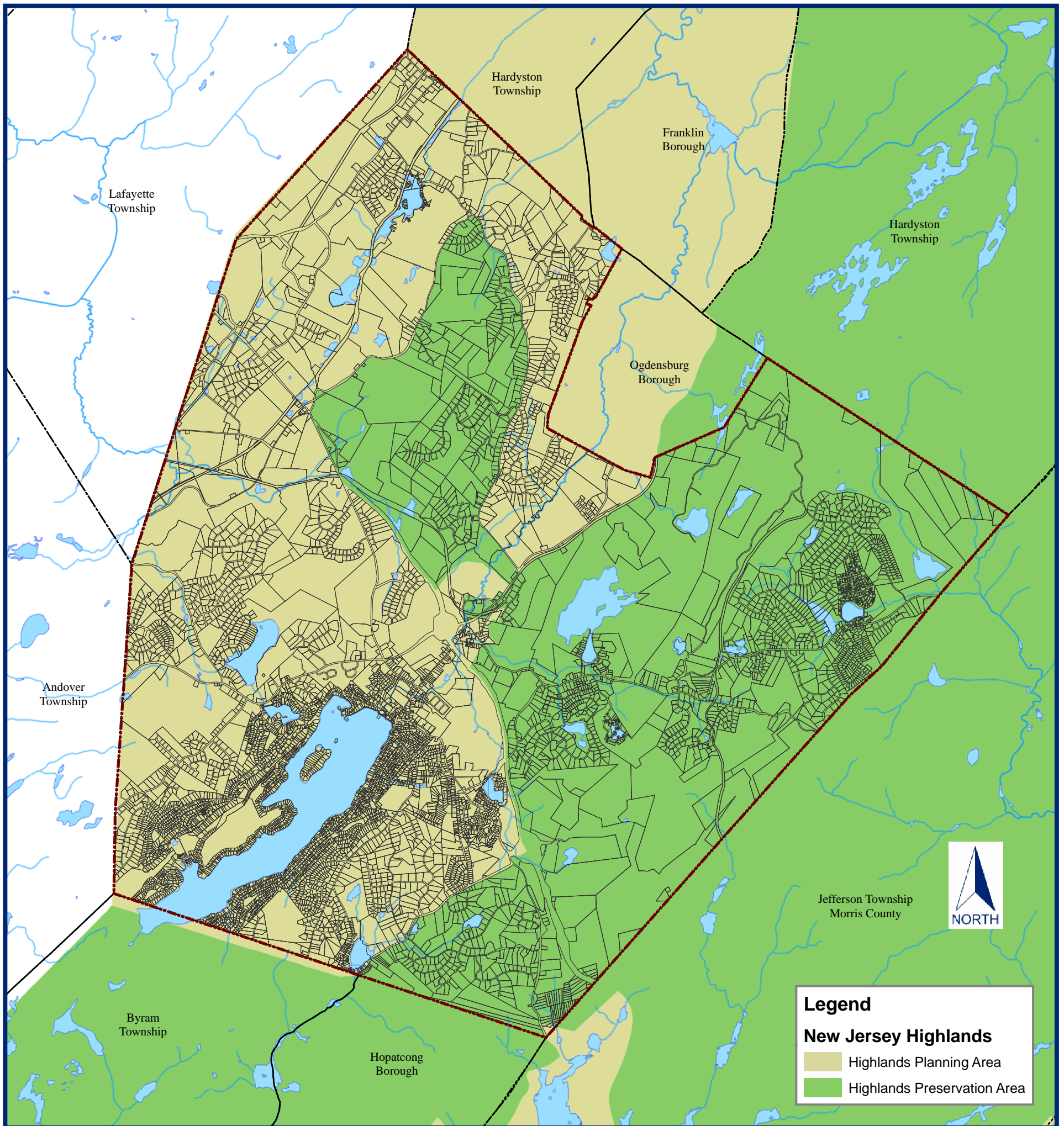


New Jersey Highlands: Sparta Township



"Highlands Preservation Area

Of the over 800,000 acres that make up New Jersey's Highlands Region, the Highlands Act designates approximately 398,000 acres of exceptional natural resource value as the Highlands Preservation Area. Approximately 145,000 acres within the Highlands Preservation Area are undeveloped. All of the land in the Highlands Region that is not in the Highlands Preservation Area lies within the Highlands Planning Area. A complete description of the Highlands Preservation Area boundaries is set forth in Section 7 of the Highlands Water Protection and Planning Act. "

"Highlands Planning Area

The Highlands Planning Area is the portion of the Highlands Region that is not included in the Highlands Preservation Area. While the Act does not establish any new standards for the Highlands Planning Area, the Highlands regional master plan, which must be adopted by the Highlands Water Protection and Planning Council, will provide an avenue for enhanced standards, TDR, smart growth in this portion of the Highlands Region. "

"Regulated Activities

All major Highlands development as defined in the Act that is located in the Highlands Preservation Area shall require a Highlands Preservation Area approval from the DEP.

The Highlands Preservation Area approval will consist of new Standards authorized by the Highlands Act and related aspects of other regulatory programs including the "Freshwater Wetlands Protection Act," "The Endangered and Nongame Species Conservation Act," the "Water Supply Management Act," the "Water Pollution Control Act," "The Realty Improvement Sewerage and Facilities Act," the "Water Quality Planning Act," the "Safe Drinking Water Act," the "Flood Hazard Area Control Act," and any rules and regulations adopted pursuant to these Acts. The 90-day deadline does not apply to an application for a permit pursuant to the "Flood Hazard Area Control Act" in the Highlands Preservation Area affected by the Highlands Act. "

For more information on the Highlands Protection Initiative visit: <http://www.savethehighlands.org>

"This map was developed using New Jersey Department of Environmental Protection Geographic Information System digital data, but this secondary product has not been verified by NJDEP and is not state-authorized."

DISCLAIMER: All data is compiled from recorded deeds, plats and other public records and data. Primary sources from which this data was compiled must be consulted for verification of information contained in the data. All information contained herein was created for the Township's internal use. Township of Sparta, its agents and employees shall not be held liable for any errors in the data. This includes errors of omission, commission, errors concerning the content of the data, and relative and positional accuracy of the data. This data cannot be construed to be a legal document.